



**Better FTTx,
Better Life.**

FCST01130-F

Fiber Optic Splice Closure

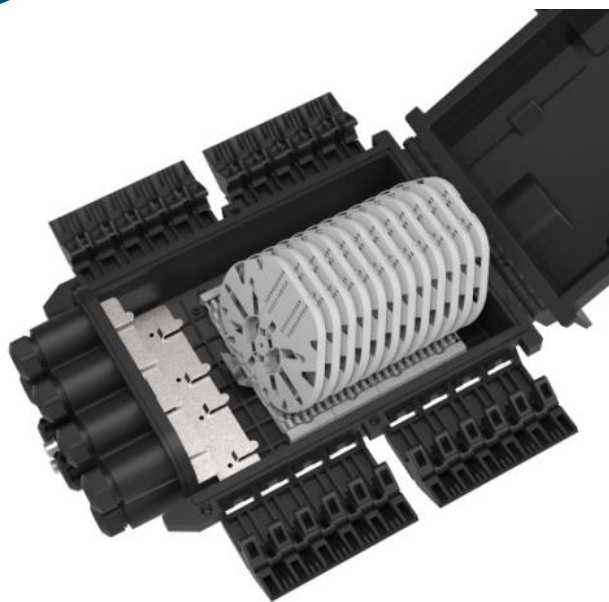
-Inline Type

M:+86 18720624696

Email:sales@fcst.com

Tel:+86-21-38726791 38726792

Web:www.fcst.com www.micro-duct.com



Product Overview

FCST01130-F Fiber Optic Splice Closure is used as a termination point for the feeder cable to connect with drop cable in FTTx communication network system. The fiber splicing, splitting, distribution can be done in this box, and meanwhile it provides solid protection and management for the FTTx network building.

Product Advantages

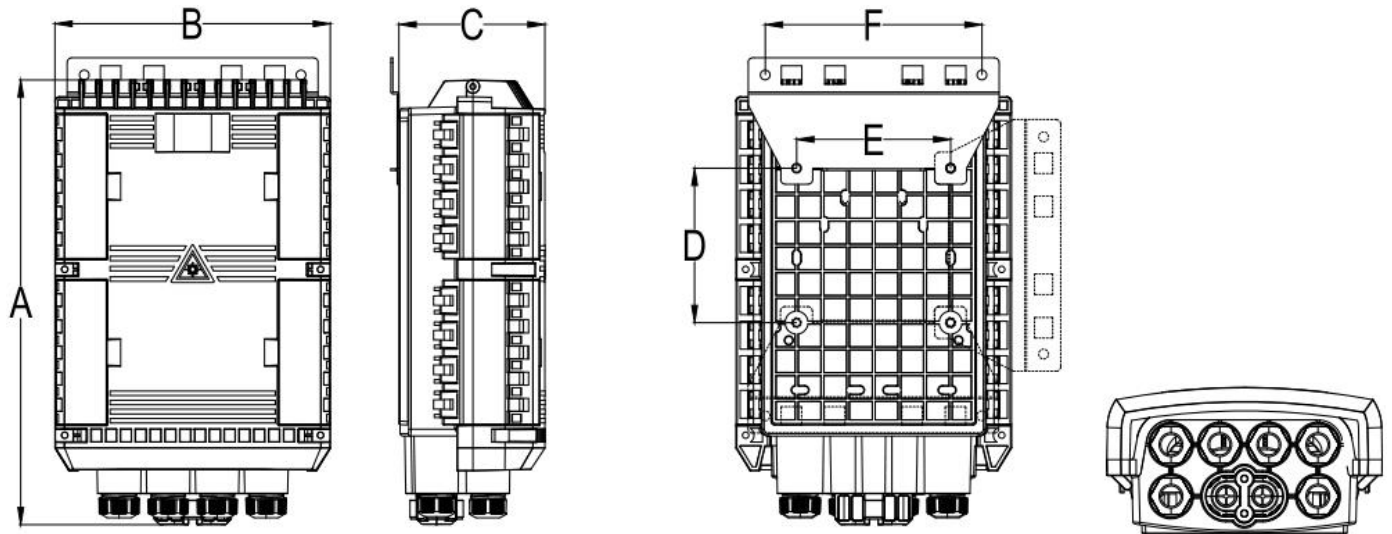
- Material:PP.
- Protection level up to IP68.
- Moisture proof, waterproof, dust-proof, anti-aging.
- The product has multiple reuse and capacity expansion functions.
- Installation method: pole-mounted, aerial-mounted, wall-mounted.
- Advanced structure design, easy operation and reasonable routing.

Product Specifications

Construction	Description
Max. Capacity	144、192、288、384 Cores
Material	PP
Inlets/Outlets	4/4
Installation	Pole mounting,Aerial mounted ,Wall-mounting
Protection Level	IP68
Splitter Type	1* 8 PLC Splitter
Length	388mm 15.276in
Width	242mm 9.528in
Height	128mm 5.039in
Weight	4200 g
Diameter Of Fiber Cable	Φ 18mm
Number Of Trays	144 Cores:12pcs 192 Cores:24pcs 288 Cores:24&12pcs 384 Cores:24pcs
Capacity Of Tray	144 Cores:12F 192 Cores:8F 288 Cores:12F&24F 384 Cores:16F

Product Size

Unit:mm



A:388mm

B:242mm

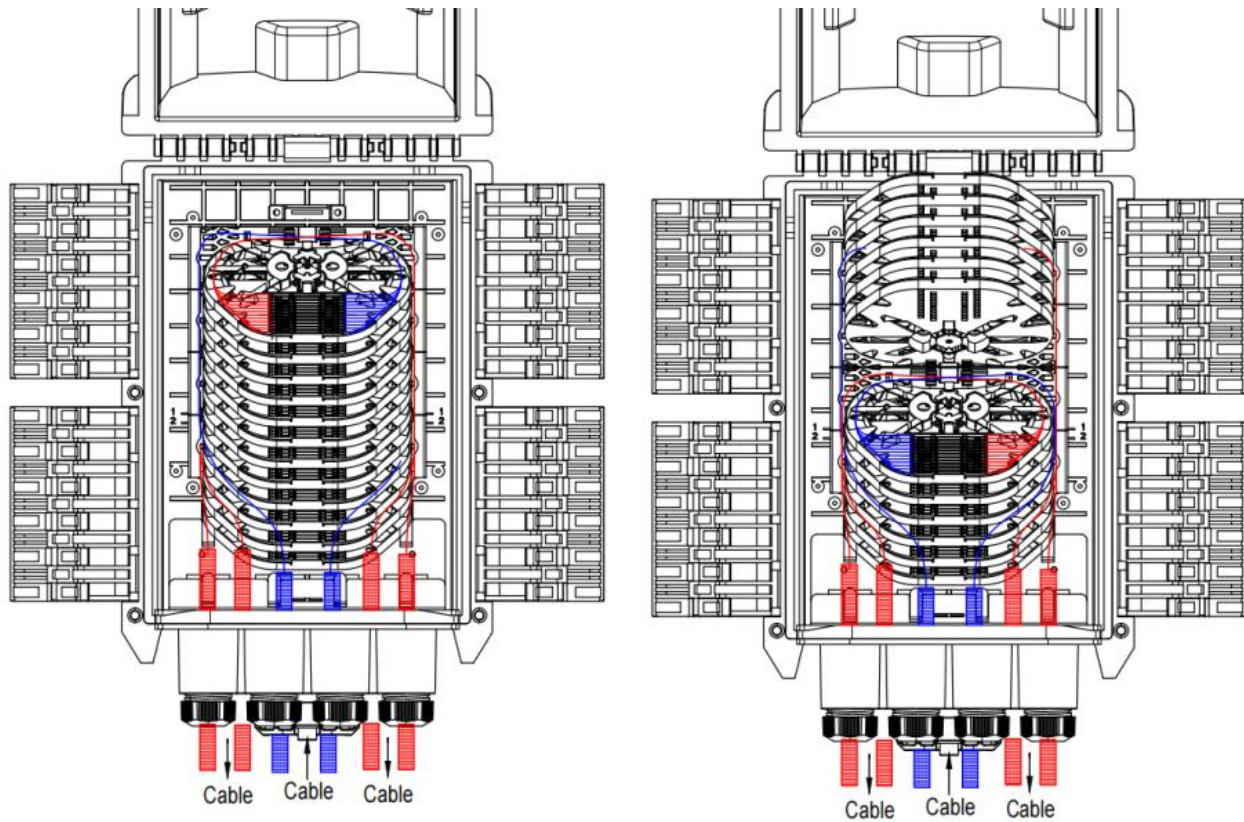
C:128mm

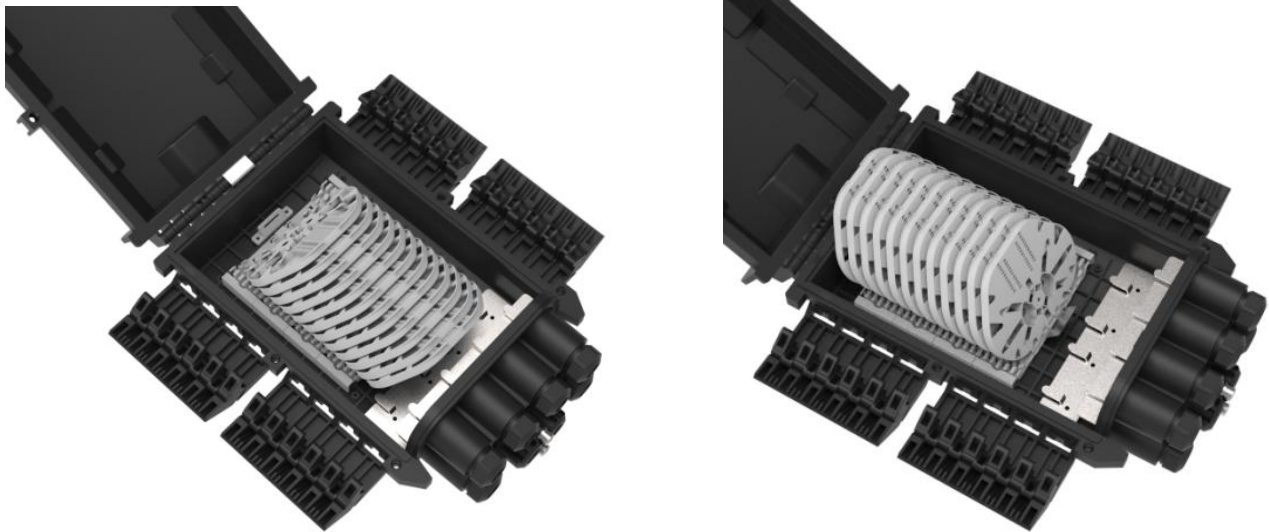
D:135mm

E:135mm





F:190mm

Product Structure









Fiber Splice Tray Type

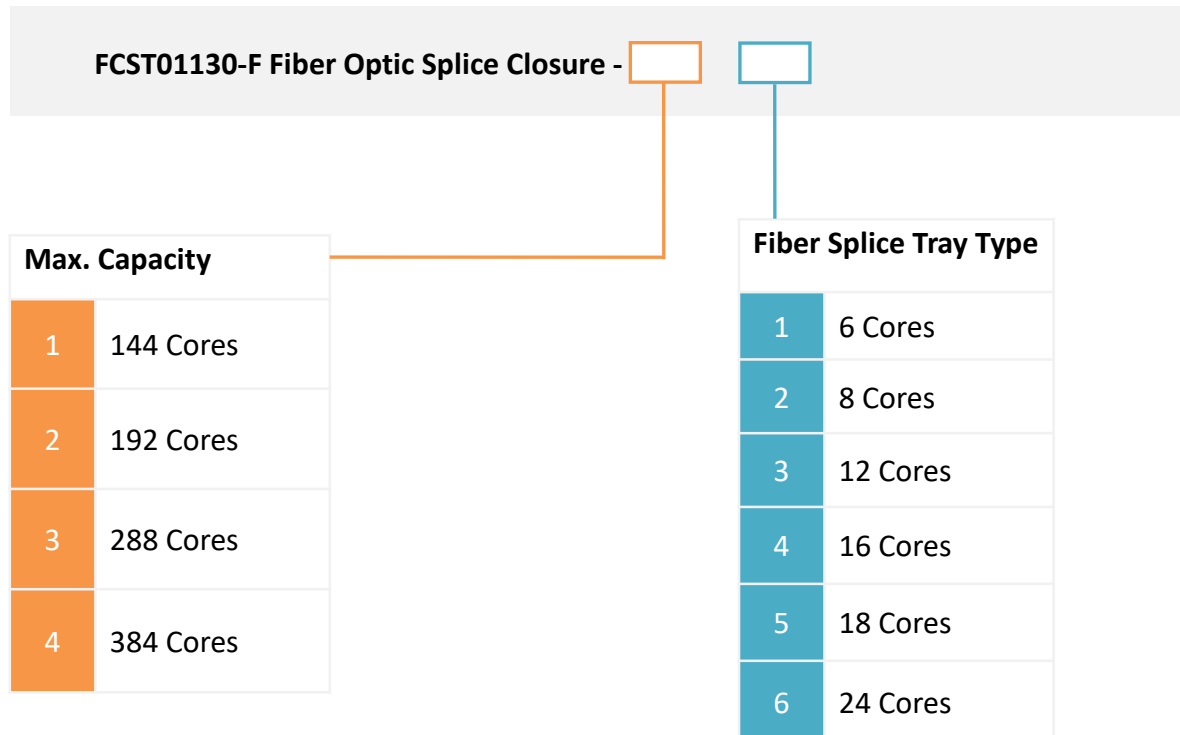
Item	Splice Tray A	Splice Tray B	Splice Tray A-1	Splice Tray C
Dimensions(H*W*D, mm)	134*104*8	134*104*4	134*104*8	136 * 104 * 4
Net Weight (kg)	0.021	0.015	0.021	0.018
Picture				
Color	RAL7035	RAL7035	RAL7035	RAL7035
Material	PC+ABS	PC+ABS	PC+ABS	PC+ABS
Splicing Capacity of a Tray(cores)	12 (2 layers of heat shrinkable protective sleeve)	8 (1 layer of heat shrinkable protective sleeve)	6 (2 layers of heat shrinkable protective sleeve)	12 (1 layer of heat shrinkable protective sleeve)
Splitter Capacity of a Tray(PCS)	1 (PLC 1X2, 1X4, 1X8, 0.9mm fiber,60x7x4mm)	/	1 (PLC 1X16, 0.9mm fiber,60x12x4mm)	/
Maximum(PCS)	12	24	12	24
Default(PCS)	/	/	/	/
<p>Note: 1. The above trays can be mixed according to requirements. 2. Configuration rules: 1A=2B=2C=1D=1E=2F. 3.The types of fiber discs are increasing continuously.</p>				

FCST01130-F FIBER OPTIC SPLICE CLOSURE-INLINE TYPE

Item	Splice Tray D	Splice Tray E	Splice Tray E-1	Splice Tray F
Dimensions (H*W*D,mm)	136 * 104 * 8	135 *125*8	135 *125*8	135 *125*4
Net Weight (kg)	0.024	0.033	0.033	0.021
Picture				
Color	RAL7035	RAL7035	RAL7035	RAL7035
Material	PC+ABS	PC+ABS	PC+ABS	PC+ABS
Splicing Capacity of a Tray(cores)	24 (2 layers of heat shrinkable protection sleeve)	24 (2 layers of heat shrinkable protection sleeve)	18 (2 layers of heat shrinkable protection sleeve)	16(1 layer of heat shrinkable protective sleeve)
Splitter Capacity of a Tray(PCS)	/	1 (PLC 1X2, 1X4, 1X8, 0.9mm fiber,60x7x4mm)	1 (PLC 1X16, 0.9mm fiber,60x12x4mm)	/
Maximum(PCS)	12	12	12	24
Default(PCS)	12	/	/	/

Note: 1. The above trays can be mixed according to requirements.
 2.Configuration rules: 1A=2B=2C=1D=1E=2F.
 3.The types of fiber discs are increasing continuously.

Ordering Information



Product Installation

Wall-mounted Installation

Drill 2 holes in the wall according to the dimension, place the expansion plug $\Phi 7.5*40$, place the box to match up the holes and use screws to fasten.



Pole-mounted Installation

Pass the hoop ring through the slot of the back plate and fix it on the telecommunication pole.



Aerial-mounted Installation

Tie the two installed on the chassis of the overhead hung on the wire, and then bolted, prevent the case fall off.



Packing Information



Construction	Description
Outside Dimension (L*W*H) mm	410*255*145
Weight/PC (kgs)	6
Carton Size (L*W*H) mm	540*405*655
Qty/CTN (pcs)	6
Weight/CTN (kgs)	26

Related Products



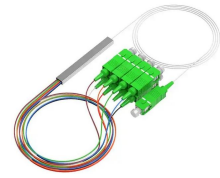
Fusion Splicer



Fiber Optic Cable



Fusion Splice Protection Sleeve



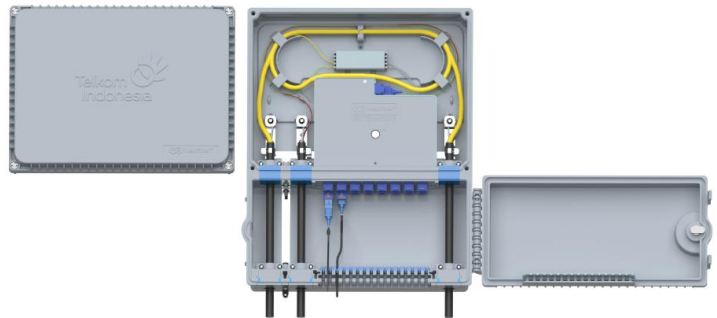
PLC Splitter Steel Tube Type

Design And Customization Services

- Provide service with whole process from blueprint to product to the customer.
- Meet customer's requirement to customize logo in suitable place for existing product.
- Meet customer's requirement to make reasonable modify and customization for existing product.
- Provide free design according to the requirement of customer after signed cooperative agreement.



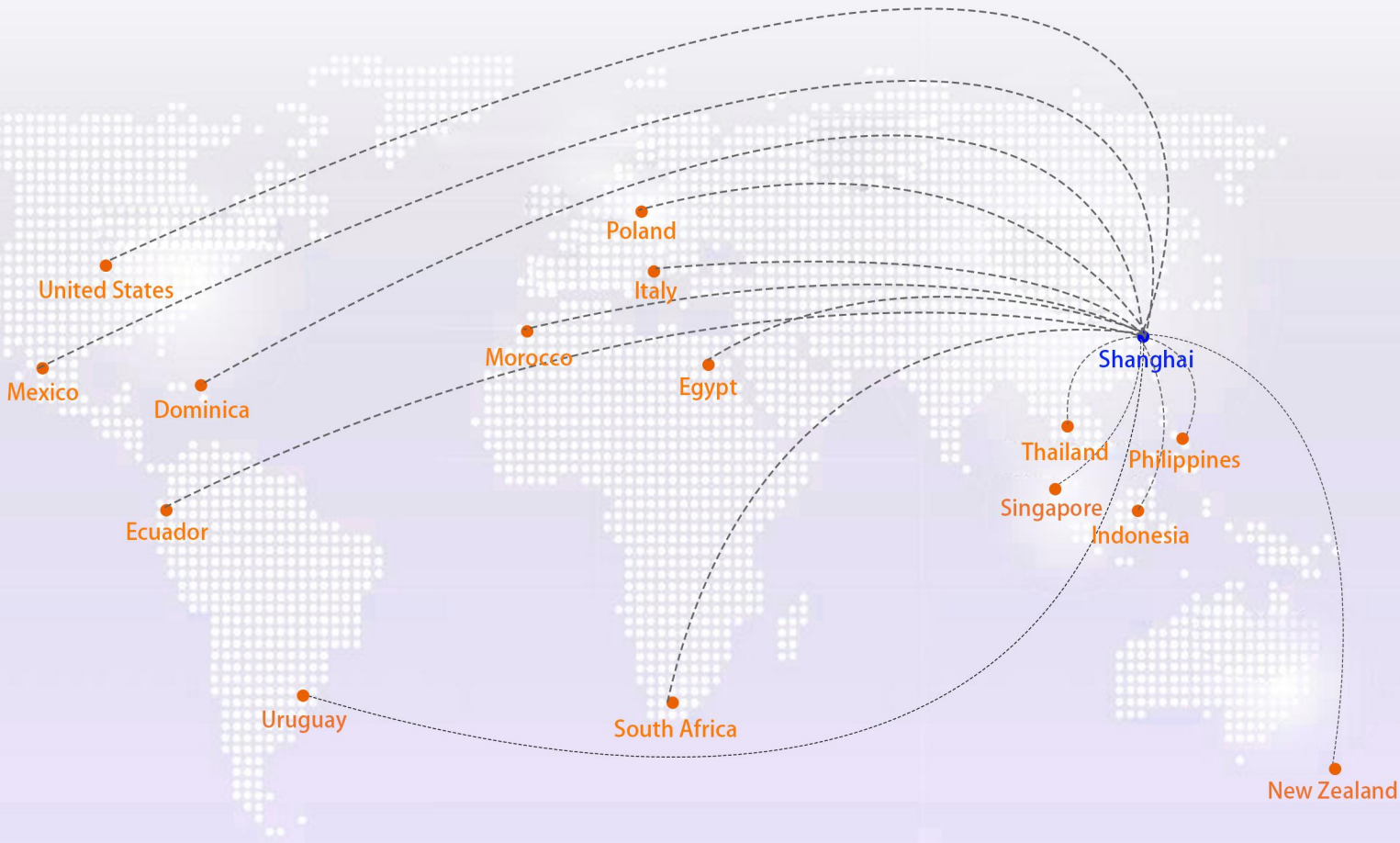
FCST01131



FCST02253



Fiber Cable Solution Technology Co.,Ltd.



Overseas Agency

www.fcst.com www.micro-duct.com



FCST - Better FTTx, Better Life.

We offer 4 solutions

- FTTH ODN Solution
- Underground Cable Installation Solution
- Aerial Cable Installation Solution
- Fiber Tools & Test Solution

As a FTTx solution supplier, we can also do ODM according to project. We will continue to innovate and contribute more to the construction of the global optical fiber network.

Rm402 block A Watts gallop tower No.2816 YiXian Rd, BaoShan District, Shanghai 200441.

Tel:+86-21-38726791 +86-21-38726792 Fax:+86-21-38726793

M:+86 18720624696 Email:sales@fcst.com